



Pennsylvania Coalition of Affiliated
Healthcare & Living Communities

2021 FALL CONFERENCE AGENDA

CREDIT APPROVAL NOTICE

The 2021 fall educational offerings has been submitted to the National Continuing Education Review Service (NCERS) of the National Association of Long Term Care Administrator Boards (NAB) for 13.5 maximum credit hours available for Nursing Home

Administrators and 13.5 maximum credit hours available for Assisted Living Residence Administrators. (19.5 total)

PACAH is an approved provider through the Department of Human Services Bureau of Human Services Licensing. Total CEUs available: 10

This program offers 13.5 maximum credit hours available fulfilling the requirements of the Pennsylvania State Board of Nursing. (19.5 total)

PACAH is registered with the Pennsylvania State Board of Accountancy and is approved for 4.5 total credit hours.

This program has been submitted for continuing education (CE) hours by the Certifying Board for Dietary Managers for 19.5 General CE Hours. (13.5 maximum available)

CEU LEGEND

NHA - Nursing Home Administrators

RC/AL - Assisted Living Administrators

PC - Personal Care Home Administrators

RN - Nursing

CPE - Fiscal

CBDM - Dietary



CERTIFICATES OF ATTENDANCE

Certificate of attendance retrieval information will be distributed via email by October 12, 2021. NAB/Ncers CEUs will be uploaded to the registry per NAB/Ncers guidelines.

MONDAY, SEPTEMBER 13TH

PACAH EXECUTIVE BOARD MEETING AND LUNCH (PRIVATE)

10 a.m. - noon

REGISTRATION

11 a.m. - 4 p.m.

GENERAL SESSION - PELICAN TRAINING - "EMERGENCY PREPAREDNESS - A FULL TIME CHALLENGE"

1 - 4:15 p.m.

NHA - 3

RC/AL - 3

PC - 3

RN - 3

Emergency preparedness has become more of a challenge than ever before. The types of incidents we deal with today is dynamically different from what we were dealing with just a few years ago. And federal and state regulatory agencies have gotten involved, and are passing regulations that make true "emergency preparedness" a full time challenge.

In this session, Steve Wilder, a nationally recognized healthcare safety and security specialist and a frequent PACAH speaker, will look at the concept of emergency preparedness, how to identify your likely vulnerabilities, how to build your plan, and how to test your plan and your people. In addition, Steve will talk about the recent steps taken by OSHA as it relates to COVID, and will provide direction on what to do to prepare for an OSHA visit, and how to respond when/if OSHA shows up.

Objectives:

- Be able to explain the purpose of a Hazard Vulnerability Assessment (HVA), what is included in the HVA, and how to use the HVA to develop your plan.
- Explain the concept of the Nursing Home Incident Command System (NHICS) and the Assisted Living Incident Command System (ALICS) and how to incorporate Incident Command into your Emergency Operation Plan.
- Identify and explain three types of emergency preparedness drills.
- Explain the new position taken by OSHA regarding protecting healthcare workers from COVID in Long Term Care facilities

*Steve Wilder, BA, CHSP, STS, COO
Sorensen Wilder & Associates*

AFTERNOON BREAK - SPONSORED BY PELICAN INSURANCE, RRG

2:30 - 3:30 p.m.

FISCAL MANAGEMENT COMMITTEE MEETING (PRIVATE)

2 - 4 p.m.

WELCOME RECEPTION - SPONSORED BY AFFINITY HEALTH SERVICES, INC.

5 - 7 p.m.

Join PACAH and Affinity Health Services, Inc. for hors d'oeuvres and cocktails.

TUESDAY, SEPTEMBER 14TH

REGISTRATION

7 a.m. - 4 p.m.

CONTINENTAL BREAKFAST

7 - 8 a.m.

GENERAL SESSION - KEYNOTE, KELLY SWANSON - "CREATING A STORY DRIVEN TEAM"

8 - 9 a.m.

NHA - 1

RC/AL - 1

PC - 1

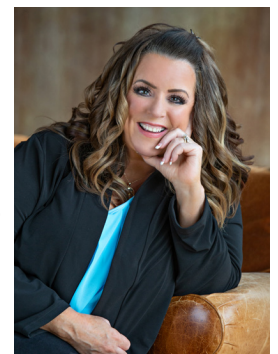
RN - 1

CBDM - 1

Help Your Team Connect and Engage Through the Power of Your Story

Is your team burned out and dealing with a lot of stress and change? Well, this is the perfect program for you. Kelly will get both you and your team tapped back into passion and purpose for what they do and why it matters. Kelly uses story to show your employees how their small piece in this puzzle makes a big difference to the lives of others. Not just so they are told they matter - but that they are SHOWN they matter.

Kelly will teach the key principles that keep a team working together instead of apart, by helping them



get a renewed sense of passion for their organization, company, or facility story. She will also show you how to cultivate a healthy attitude that makes work not feel so much like work.

This is NOT a program on dealing with difficult people. This is not another program on dealing with millennials. This is a program on how to connect and engage with the people you serve - how to motivate each other and ourselves. This is based on the idea that getting a team engaged happens when you connect them to the company story - when you connect to the employee story - and when you connect to the story of the people you serve.

Audience Take-Aways

- Learn Kelly's six secrets to connect and engage
- Learn how to rewrite your inner script to deal with stress and change
- Learn how to inspire and motivate others through story
- Practice connecting through story
- Learn some basic networking skills that connect and engage

Kelly Swanson, Award-Winning Storyteller, Funny Motivational Speaker, Strategic Storyteller

BREAKOUT SESSION - "CYBERTERRORISM: ATTACK ON THE CORE INFRASTRUCTURE"

9:30 - 10:30 a.m.

NHA - 1

RC/AL - 1

PC - 1

RN - 1

CBDM - 1

Cyberterrorism has been in the news for quite some time and seems to be in the headlines on a daily basis. Cyberterrorism is becoming or has become the primary method of bad actors or bad actors acting on behalf of nation states to cause severe disruption or widespread fear in society. Their main goal has been to attack the core infrastructure of society to interrupt the way of life of others. The end result is the spread of fear, interruption in the economy, interruption in key services, food supply, basic utilities, health care services and financial services among others.

Understanding cyberterrorism and the cybersecurity that is used to combat cyberterrorism is critical. In this session, we will highlight and discuss the recent trend of the cyber-attacks on core components of infrastructure with a focus on how the healthcare industry is at the core of the critical infrastructure throughout the world and a primary target of the bad actors. A discussion on the methods used by the bad actors while conducting the cyber-attacks will be addressed. In addition, the ongoing controls will be discussed / identified along with the recent trends to combat the ongoing battle with cyberterrorism.

Objectives:

- Provide attendees an increased understanding of the direction of cybercriminals / bad actors regarding their desired targets and the risk to the healthcare industry.
- Provide attendees with an understanding of the trends in the attack methods utilized by the cybercriminals.
- An identification of the ongoing controls including the recent trends implemented to combat cyberterrorism along with the attendees' role in implementing the controls.

*Christopher E. Joseph, CPA, CISA, CRISC, CITP, Partner - Consulting Services
Arnett Carbis Toothman LLP*

BREAKOUT SESSION - "INTERDISCIPLINARY APPROACH TO COGNITIVE IMPAIRMENT"

9:30 - 10:30 a.m.

NHA - 1

RC/AL - 1

RN - 1

CBDM - 1

With our residents and family members reuniting, this presentation allows for an overview of an interdisciplinary approach to your residents' overall health and safety. Cognitive declines can affect all aspects of Activities of Daily Living. We will be reviewing approaches and interventions to help with maintaining the highest level of function for your residents while maximizing personal safety and promoting resident dignity. This system may include internal compensatory strategies and/or external environmental/visual cues. You will learn how a patient-centered approach will decrease behaviors and increase a resident's feelings of self-worth. The goal is to involve the interdisciplinary team in promoting the resident's safety and

independence with all functional daily living tasks.

*Lisa A. Beck, MS, CCC, SLP, Clinical Director
AdvantageCare Rehabilitation*

MORNING SNACK BREAK

10:30 - 11:30 a.m.

BREAKOUT SESSION - "MEDICAID ELIGIBILITY: CURRENT SOLUTIONS TO COMMON PROBLEMS"

10:45 - 11:45 a.m.

NHA - 1
RC/AL - 1
RN - 1
CPE - 1
CBDM - 1

Through an interactive session using real-world examples, the presenter will discuss current solutions to the most common Medicaid eligibility problems continuing to plague nursing homes across the Commonwealth, including uncooperative residents and family members, transfer penalties, collection matters, BHA stipulations and much more. While doing so, the presenters will bring the audience up to date on the current status of any COVID-related changes implemented in 2020 and 2021.

*John N. Kennedy, Esq., Founder, President & CEO
Benjamin J. Glatfelter, Esq., Shareholder
Casey L. Slotter, Esq., Attorney
Kevin L. Morris, Esq., Attorney
Kennedy, PC Law Offices*

BREAKOUT SESSION - "DO WE NEED HEALTHIER BUILDINGS? WHAT ARE THEY, HOW DO WE GET THERE?"

10:45 - 11:45 a.m.

NHA - 1
RC/AL - 1
PC - 1
RN - 1
CBDM - 1

Due to the increased intensity of study of how the coronavirus is spread, comes renewed interest in the healthcare physical environment, and in particular, its role in infection prevention. Session will inform attendees of current and upcoming standards and materials for 'better' buildings. Starting with a review of existing and emerging healthy building standards, and certifications such as LEED, WELL, etc. Discussion with touch on building codes, FGI guidelines, and related references. Healthier and more environmentally friendly materials used in renovation and new construction as well as mechanical and lighting systems will be reviewed. Air quality issues will be presented covering air filtration for pathogens. The presentation will also cover current advices in lighting to more closely align with human circadian rhythms. Lastly, discussion will also include how outdoor spaces, and natural lighting can help contribute to a healthier overall environment.

*Walt Zapor, Senior Associate
KCBA Architects*

*Nick Kaintz, Vice President
Snyder Hoffman Associates*

LUNCH

11:45 a.m. - 12:45 p.m.

GENERAL SESSION "PENNSYLVANIA DEPARTMENT OF HEALTH UPDATE"

1 - 2 p.m.

NHA - 1
RC/AL - 1
RN - 1
CBDM - 1

This session will feature the director of the division of nursing care facilities who will provide timely information on the operations of her department as it relates to surveys and licensing. She will discuss updates and statistical data on Pennsylvania's nearly 700 nursing facilities, new emphasis from the federal government, and other issues, impacting nursing facilities from the perspective of licensing and surveys. The director of the division of safety inspection will also provide updates on critical life-safety issues.

Charles Schlegel, Director, Division of Safety Inspection
Susan Williamson, Director, Division of Nursing Care Facilities
Pennsylvania Department of Health, Division of Long-Term Care

BREAKOUT SESSION - "DEFENSIVE DOCUMENTATION"

2:15 - 3:15 p.m.

NHA – 1

RC/AL - 1

PC - 1

RN – 1

CBDM - 1

In today's litigious culture, documentation in the medical record is the primary source utilized when it comes to trying to defend the care and services that have been provided. This session is geared toward providing strategies and key elements in medical record documentation to meet the challenges of documenting defensively.

Objectives:

- Review the role of the medical record in litigation
- Describe key requirements of a defensible medical record.
- Understand how the medical record is used to prove/disprove allegations

Angela M. Huffman, RN WCC, Vice President of Clinical Services
Affinity Health Services

BREAKOUT SESSION - "APOLOGY - DO I, OR DON'T I?"

2:15 - 3:15 p.m.

NHA – 1

RC/AL - 1

PC - 1

RN – 1

CBDM - 1

Apology and disclosure, a balancing act faced by risk managers in any part of the healthcare industry but perhaps more so in the arena of Continuing Care Communities, Skilled Nursing and Long Term Care Facilities. The basic tenant of a safe and secure residence is a mainstay in these communities. This session will address the issues faced by administration and risk management when confronted with a patient safety incident, including disclosure and potentially an apology for same. While disclosure of patient safety incidents is mandatory, an accompanying apology is not. Many healthcare providers want to offer an apology when something untoward happens, but are concerned about the effect of expressing sympathy and/or regret to a patient/resident/family member should the incident result in litigation. In acknowledgment of this concern, numerous states have enacted so called "Apology" statutes specifically intended to protect healthcare providers from having an apology used against them in future litigation under certain circumstances. We will examine and discuss Pennsylvania's "Apology" statute and compare it to other states' statutes and how an effective expression of sympathy and regret during disclosure of a patient safety incident can trigger statutory protection should the patient/resident/family decide to pursue litigation.

Roseann Lynn Brenner, Esq., Member
Elizabeth Syer-Ashmore, Esq., Member
Goldfein and Joseph, P.C.

BREAKOUT SESSION - "LONG-TERM CARE ADMISSION AGREEMENTS"

3:30 - 4:30 p.m.

NHA – 1

RC/AL - 1

PC - 1

RN – 1

CBDM - 1

This course is intended to provide information about admission agreements at long term care facilities and communities and how these agreements should be reviewed with scrutiny. This course will address general contract principles in the context of these agreements, including a review of the PA filial responsibility law. This course will also address providing financial information to a long-term care facility as part of an application for admission. Other matters to discuss include the importance of a power of attorney or legal representative to assist in this process, the ability to negotiate admission agreements, the necessary parties to these agreements, and understanding the duration and/or early termination of these agreements.

Nora Gieg Chatha, Esq., Shareholder

Jennifer Bittel Derby, Esq., Associate

Tucker Arensberg, P.C.

BREAKOUT SESSION - "IMPROVED QUALITY MEASURES THROUGH COMPREHENSIVE PAIN MANAGEMENT"

3:30 - 4:30 p.m.

NHA – 1

RC/AL - 1

RN – 1

CBDM - 1

Pain is likely the number one cause of impaired function, increased behaviors and re-admissions to the hospital. Therefore, it is vital to have a comprehensive pain management program that analyzes and establishes accountability in your facility. Join us to learn more about assessment and treatment of pain in a variety of diagnoses as well as how pain affects quality measures, resident's long-term outcomes and quality of life. We will discuss the structure and components of a comprehensive pain management program that is effective, and outcomes driven.

Objectives:

- Participant will be able to perform and describe pain assessment and treatment plans for a variety of diagnoses.
- Participant will be able to explain how pain affects patient outcomes.
- Participant will be able to describe a comprehensive pain management program that enhances quality of life of residents and decrease burden of care of staff and families.

Heather Meadows, CCC/SLP, Executive Director of PA, CDP

Premier Therapy, LLC

WEDNESDAY, SEPTEMBER 15TH

REGISTRATION

7 a.m. - 4 p.m.

GENERAL SESSION - "PACAH BUSINESS MEETING, LEGISLATIVE UPDATE & BREAKFAST"

8 - 9 a.m.

NHA – .5

RC/AL - .5

RN – .5

CBDM - .5

PACAH's Executive Director will update members on current policy, regulatory and legislative issues impacting long-term care facilities. These updates will include information on funding, IGT, Community HealthChoices, COVID-19, and other pertinent issues.

PACAH 2021-2022 board elections will also take place.

*Chase Cannon, Executive Director
PACAH*

GENERAL SESSION - "UNDERSTANDING OSHA'S COVID-19 ETS"

9:15 - 10:15 a.m.

NHA – 1

RC/AL - 1

PC - 1

RN – 1

CBDM - 1

OSHA has issued mandatory requirements for nursing homes, personal care homes, assisted living facilities and other healthcare employers to protect workers from COVID-19. These new regulations went into effect July 21, 2021, and OSHA has begun inspections applying these new requirements.

This session will review OSHA requirements for healthcare employers including but not limited to mandatory training, job protection and payments to employees, written respiratory protection program elements, environmental modifications and nonretaliation.

Objectives:

- Compare their existing respiratory protection programs to OSHA requirements
- Understand medical removal provisions and payment obligations
- Be prepared for an OSHA investigation

*Paula G. Sanders, Esq., Principal and Co-Chair, Health Care Practice Group, Chair COVID-19 Task Force
Post & Schell, P.C.*

MORNING SNACK BREAK

10:15 - 11:15 a.m.

BREAKOUT SESSION - "LOOKING FOR WILL ROBINSON - ARTIFICIAL INTELLIGENCE IN SENIOR CARE"

10:30 - 11:30 a.m.

NHA – 1

RC/AL - 1

PC - 1

RN – 1

CBDM - 1

Through the integration of artificial intelligence, the long-term care industry can strategically serve seniors better by making treatment more effective and efficient.

Attendees will learn:

- How automated data analysis assists staff with the information needed to fully personalize patient care.
- How improved technology can reduce the amount of time spent on administrative tasks, allowing them to focus on the more human-centered aspects of their roles.
- How certain technologies can alleviate isolation for seniors.
- How wearable tech and remote monitoring can greatly enhance Independence without jeopardizing safety.
- What are the legal implications of AI: (a) Informed consent, (b) safety and transparency (c) effectiveness (d) data protection/privacy, (e) cyber-security and (f) liability.
- How to protect the facility and the residence through careful vendor contracting.

*Cynthia A. Haines, Esq., Principal and Co-Chair, Information Privacy & Security Practice Group
Post & Schell, P.C.*

BREAKOUT SESSION - "IMPROVING CLINICAL OUTCOMES AND INCREASING CENSUS: INFLUENCE QUALITY MEASURES AND MITIGATE RISK WITH LIVE DATA"

10:30 - 11:30 a.m.

NHA – 1

RC/AL - 1

RN – 1

CPE - 1

CBDM - 1

The COVID-19 pandemic has exposed a lot of inefficiencies within healthcare — one of the largest being the ability to access and analyze live patient data to improve clinical and financial outcomes.

During this session we will discuss how to leverage LIVE EHR data to improve facility Quality Measures and mitigate risk. We'll explore what Quality Measures truly mean to the clinical well-being of your patients, how they impact 5-star ratings, and which ones are of most interest to hospitals and payers. Through this understanding, we'll show you strategies you can use to improve your 5-star rating and increase referrals with healthcare partners and the community. Finally, we will take a look at how the use of live data is enabling clinical leaders to quickly identify their most at-risk patients to mitigate that risk and improve outcomes.

Objectives:

- Identify and improve Quality Measures prior to the patient triggering on the MDS
- Understand inherent clinical crosswalks to mitigate risk
- Learn techniques to improve your 5 Star Rating
- Implement strategies to improve census outcomes

Target Audience: Nursing Home Administrators, Director of Nursing, RNAC, Business Development, Admissions

*Tricia Whaley, Senior Director, Provider Relations
Complete HealthCare Resources – Eastern, Inc*

*Cheryl Scalzo, RN, Clinical Account Specialist
Real Time Medical Systems*

PACAH 2021 FALL VENDOR SHOW & LUNCH

11:30 a.m. - 1:30 p.m.

BREAKOUT SESSION - MCO PANEL"

1:45 - 2:45 p.m.

NHA – 1

RC/AL - 1

RN – 1

CPE - 1

CBDM - 1

Join representatives from the three Managed Care Organizations (MCOs) involved in Community HealthChoices (CHC). This interactive session will allow for the MCOs to answer frequently asked questions as well as respond to attendee comments and questions on anything related to CHC. The MCOs will also provide any necessary updates and program information to attendees as well as other information that will help attendees plan for or adjust to ongoing implementation of managed care in Pennsylvania.

*Norris Bennis, Vice President, Legislative & Government Affairs
PA Health & Wellness*

*Jill Blessington, Manager, Ancillary Contracting
AmeriHealth Caritas Pennsylvania*

*Andrea M. Farrell, Director, Ancillary and LTSS Network Management
UPMC Health Plan/UPMC Community HealthChoices*

Moderator: Chase Cannon, Executive Director, PACAH

BREAKOUT SESSION - "THE DATA OF WOUND CARE IN THE NURSING HOME"

1:45 - 2:45 p.m.

NHA – 1

RC/AL - 1

RN – 1

CBDM - 1

Wound-care presents unique regulatory risks in the nursing home market. Nursing home administrators have reacted by implementing QAPI systems to mitigate these risks. These QAPI generally focus on the micro-trends in that single nursing home, or in homes in their corporate unit. However, there exists a growing body of both national and state-level data that can strengthen QAPI and risk-management.

Nursing home administrators need to understand the trends in this data to build robust QAPI and risk-management related to wound-care.

This presentation will provide national data related to wound-care that will aid nursing home administrators in understanding the nature and scope of regulatory risks of wound-care in the nursing home market. Nursing home administrators need to understand the trends in this data to build robust QAPI and risk-management related to wound-care.

Objectives:

- Define the regulatory risks related to wound care in the nursing home market
- Define the wound-care datasets related to wound care in the nursing home market
- Discuss the wound-care data on a national and Pennsylvania nursing home market
- Explore the emerging trends in the wound-care data in the Pennsylvania nursing home market
- Identify the key risks in the wound-care data in the Pennsylvania nursing home market
- Suggest risk mitigation strategies for wound care in the Pennsylvania nursing home market

*Zwelithini Tunyiswa, Chief Marketing Officer
Wound Healing Solutions*

AFTERNOON SNACK BREAK

2:45 - 3:45 p.m.

GENERAL SESSION - "FISCAL OFFICERS GROUP MEETING/OFFICE OF LONG TERM CARE UPDATE"

3 - 4 p.m.

NHA – 1

RC/AL - 1

RN – 1

CPE - 1

CBDM - 1

The Department of Human Services' (DHS) Office of Long-Term Living (OLTL) staff will report on current initiatives, including a focus on Community HealthChoices in Pennsylvania. The discussion will include implementation throughout the state, any ongoing issues, payment of claims, and answer any questions from attendees. Other initiatives being undertaken by OLTL and DHS will also be discussed as well as the current budget.

*Jamie Buchenaur, Deputy Secretary
Daniel Sharar, Chief Financial Officer/Director of Finance
Pennsylvania Office of Long Term Living*

*Edward P. Frigo, Director, Fiscal Services
Premier Healthcare Resources*